



UNIVERSAL BEAM & TROLLEY

Rigging up a beam in trolley system to support and balance the extractor is essential to maximize the tube removal production rate. PSR's Universal B&T System rapidly bolts-up to the water box flanges of various size and shape condensers, and works well in situations with tight overhead clearances.

■ **Beam and Mounting Brackets:** Thick plate 30" X 12" L brackets mount to the condensers flange and are connected to a W8X13/lb. beam utilizing custom fitted structural steel connectors and location plates. Beams are provided un-painted, with a prime coat or painted safety yellow and available in 10, 12, 15, 20 and 25 ft. lengths and include. Two trolley end stops and Grade 8 fastener package are included as standard items. The universal beam is rated for 1 ton but specifically designed to support PSR Tube Extractors. Please consult with PSR before using in other applications.

■ **Standard Trolley Set Ups:** The standard trolley is a compact 1 ton push trolley with either a tool balancer and/or 1 ton chain hoist used to support a Gin Pole. As an alternate the Harrington NTH series 1-ton combined push trolley/CF hand chain hoist is perfect for extractor balancing and gin pole rigging applications and where work quarters are usually tight and headroom is limited.

■ **Tool Balancers and Gin Poles:** Depending on the application, working within the water box or against the tube sheet with the water box removed, an adjustable tool balancer, 88-110/lbs, and or adjustable gin pole will be supplied to balance the XHD series Tube Extractor.

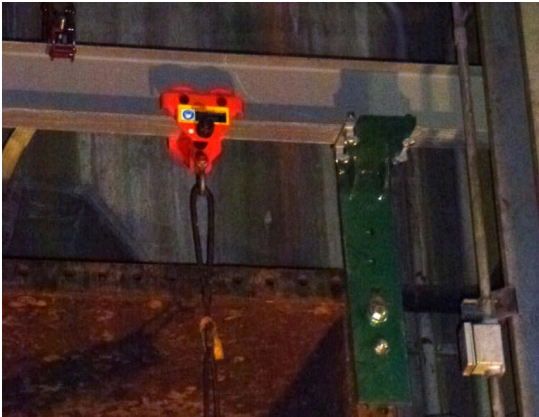
List of Parts- Standard Package

1. 2 ea. mounting brackets
2. 4 ea. sets of grade 8 mounting bolts/spacer washers and nuts
3. 2 ea. sets of beam clamp structural hardware and location plates
4. 1 ea. W10X13/lb wide flange beam cut to length with specified finish
5. 1 ea. 1- ton push trolley (Tool Balancer is supplied with the Extractor)
6. 2 ea. Trolley stops- galvanized right angle brackets with hardware

For additional information please contact Power Systems Recovery at (805) 565-9025

[↓ Scroll Down for Pictures, Details & Drawings↓](#)

BEAM MOUNTING CONFIGURATIONS

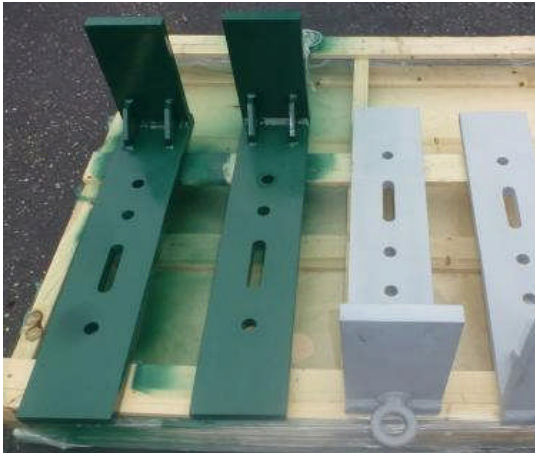


Beam on Top of Bracket for Rectangular-Shaped Water Box Flanges



Beam on Bottom of Bracket for Round - Shaped Water Box Flanges

MOUNTING BRACKET AND BOLT & HARWARE PACKAGE



↓ Scroll Down for More Pictures Details & Drawings ↓

CAPACITY
1 TONS



Mini Shop Display-Beam and Trolley



Shop Display- Structural Connection Detail



Shop Display- Structural Connection Detail



Shop Display- Structural Connection Detail